

PRESERVATION DESIGN

The following projects are local or landmarks or National Register properties, and some are located in historic districts. These projects, led by BOLA Principals Susan Boyle or Rhoda Lawrence, followed *the Secretary of the Interior's Standards*.



Fort Lawton Historic District, Seattle

2009, 2012 - 2014

Update of Seattle historic district and National Register of Historic Places nominations, and preparation of design guidelines, and concept and designs for rehabilitations and additions for 26 historic residences (with GGLO Architects)

Size: 45,117 sq. ft.

Cost: n.a.



Georgetown Steam Plant, Seattle, Seattle City Light

2012 - Present

Historic Structure Report (HSR) and a Cultural Landscape Report (CLR) to document the history and existing conditions, and a rehabilitation design to preserve the exterior envelope and roof, and improve site and landscape features.

Size: 66,681 sq. ft.

Cost: \$5.7 million est.



Cross Park Barns, Frederickson, Pierce County Parks

2016 - 2019

Adaptive use and rehabilitation of two 1920s era barns for use as a new community space with large gathering space, two meetings rooms, catering kitchen, restrooms, and office and storage space.

Size: 5,300 sq. ft.

Cost: \$2.5 million (estimate)



Nakamura U.S. Courthouse, Seattle, General Services Administration

1992 - 2011, 2003 - 2014

Modernization project with Weinstein A|U included investigation and restoration design of the terra cotta facades, and design reviews of interior rehabilitation and exterior modifications. The project was followed by a Building Preservation Plan for future maintenance.

Size: 98,000 sq. ft.

Cost: \$43 million



Fort Simcoe, White Swan, Washington State Parks and Recreation Commission

2003, 2009

Investigation, documentation, condition reports and phased construction documents for structural stabilization, exterior envelope preservation and reconstruction recommendations for four 1854 structures.

Size: 3 @ 2,342 sq. ft. and 1 @ 3,311 sq. ft.

Cost: \$925,000 (estimate)



West Point Lighthouse, Seattle Parks Department

2008 - 2010

Historic Structure Report (HSR), as-built documentation, condition analysis, and preservation design for the 1882 - 1899 lighthouse and associated support structures.

Size: 656 sq. ft.

Cost: \$300,000 (estimate)

PRESERVATION DESIGN



Reard House and Kitchen Reconstruction, Sammamish Parks & Recreation 2009; 2011; 2017; 2019

As-built documentation for relocation, reroofing specifications, porch and kitchen reconstruction design.

Size: Kitchen, 433 sq. ft.; Porch, 288 sq. ft.

Cost: n/a



Golden Gardens Bathhouse, Seattle Department of Parks & Recreation 2002 - 2004

Adaptive use and historic rehabilitation of a 1929 WPA-era brick masonry building for use as a community facility with a multipurpose room, wet classroom, catering space, meeting room, and cafe.

Size: 5,700 sq. ft.

Cost: \$1.28 million



Cherry Parkes Building, University of Washington Tacoma

2001 - 2004

Exterior restoration, interior rehabilitation and adaptive use of three ca. 1890 masonry warehouses within two designated Historic Districts for contemporary classrooms, offices, laboratories and retail use (with McGranahan Architects)

Size: 72,000 sq. ft.

Cost: \$13.06 million



South Cle Elum Depot, Washington State Parks & Recreation Commission 2001 - 2005

Restoration of a former Milwaukee Road depot at the Iron Horse State Park as an exhibit, cafe, and equipment rental facility. Work included design for exterior restoration, and complete interior rehabilitation.

Size: 3,168 sq. ft.

Cost: \$800,750



City of Roslyn Library & Community Hall, City of Roslyn

2004, 2008 - 2009, 2011 - 2012

Condition assessment, upgrade and expansion plan for the 1903-era wood framed city hall and library. The project restores exteriors, provides access, seismic and system improvements, improves energy use, and modifies the interior for enhanced library use and community spaces.

Size: 10,200 sq. ft.

Cost: \$1.3 million (Phase 1 + 1B)



Cunningham Hall, University of Washington

1991 - 1992

Relocation and rehabilitation of a historically significant structure dating from the 1910 Alaska-Yukon-Pacific-Exposition. Design and construction documents supported two construction phases with a GC/CM contract.

Size: 4,960 sq. ft.

Cost: \$2.36 million

PRESERVATION DESIGN



Olson Farm, City of Auburn & White River Valley Museum

2000 - 2018

Site and building assessment, condition analysis, documentation, program for interpretation and education use, and phased restoration designs for the 1900 era farm site and seven historic buildings, provided in multiple phases.

Size: 62 acres, including 200 sq. ft. weaving shed,
1,660 sq. ft. house & 3,150 sq. ft. barn

Cost: \$1.3 million (estimate)



Seymour Conservatory, Metropolitan Park District of Tacoma

2003, 1994, 1992

Structural restoration and master plan for a major addition to a steel framed Victorian-style 1906 greenhouse, which is located within a designated landmark park.

Size: 3,300 sq. ft., and Master Plan addition of 4,500 sq. ft.

Cost: \$593,500, 2003; \$305,000, 1992 - 1994;
\$2.48 million (expansion estimate), 2003



Clise Mansion, Redmond, King County Parks & Recreation

1992, 2000 - 2002, 2012

Planning of a former farmhouse as a community facility in the Willowmoor Historic District, Marymoor Park. Phases included structural restoration, a Historic Structure Report, exterior restoration, and site improvements.

Size: 11,680 sq. ft.

Cost: \$196,000, 2001-2002; \$185,000, 1992; \$911,083 (est.), 2001



Fort Nisqually Factor's House, Metropolitan Park District of Tacoma

1997 - 2003

Interior and exterior restoration and relocation of the 1854 Hudson's Bay Company residence. Design was preceded by a master plan and programming phase. BOLA also designed two new buildings for the site.

Size: 1,500 sq. ft.

Cost: \$413,930



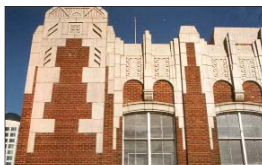
Carnegie Education Center, City of Snohomish

2005, 2012 - 2013

Restoration and rehabilitation master plan for the historic Carnegie Library for use as a public gathering place for new public functions -- meetings, receptions, films, exhibits, and teaching. A seismic upgrade was completed in 2013.

Size: 4,300 sq. ft.

Cost: \$2.3 million Master Plan est.; \$655,500, 2012 Seismic Upgrade



Seattle Old Federal Office Building, General Services Administration

2006 - 2007, 2001, 1996

Phased projects for masonry cleaning and repairs, interior image plan and finish selections, a preservation master plan with design and technical guidelines, and interpretative exhibit design.

Size: 307,100 sq. ft.

Cost: \$1.2 million, 2006-2007; \$330,000 (estimate), 2001

PRESERVATION DESIGN



Whitman College Hunter Conservatory, Walla Walla

1996 Masterplan; 1998 Adaptive Use and Restoration Design

Masterplan and adaptive use and restoration design for previous music building, with new distance learning and performance hall facilities for this 1910 Georgian Revival style building.

Size: 118,133 sq. ft.

Cost: \$1.99 million



Olympia Dolliver Building, State of WA General Administration,

1998 - 2001; 2016

Rehabilitation of a former 1917 Federal Post Office, included modifications for new offices, a restored public lobby, structural and mechanical upgrades, and exterior sandstone restoration.

Size: 24,086 sq. ft.

Cost: \$2.3 million



Penthouse Theater, University of Washington,

1991 - 1992

Pre-Design study, site selection, rehabilitation, and addition to an early Modern, glu-laminated structure. Work included the building's relocation, new terraces, theater enhancements, a 7,100 sq. ft. addition, and fine art restoration.

Size: 13,400 sq. ft. (original area 7,100 sq. ft.)

Cost: \$2.52 million (including building relocation costs)



Olympia Old State Capitol Building, State of WA General Administration

1996 - 1998

Exterior cleaning and restoration of varied sandstone, carved stone ornaments, decorative metal elements, and sheet metal cornice on an 1895 - 1906 building.

Size: 108,200 sq. ft.

Cost: \$1.29 million



Yesler Building, Seattle, King County

2000 - 2001

Restoration and cleaning of brick and sandstone masonry facades, and reconstruction and restoration of ornamental metal cornices on a 1907 Renaissance Revival style building.

Size: 108,940 sq. ft.

Cost: \$972,400